



## DATA-PROCESSING OF AEROMAGNETICS SURVEY COMPLETED FOR THE FRASER RANGE PROJECT

### ASX ANNOUNCEMENT 22 January 2018

**ASX Code:** FRN  
**Shares on Issue:** 250,000,000  
**Cash:** \$2.7 million

**Director:** Thomas Bahen  
**Director:** Glenn Whiddon  
**Director:** Aidan Platel

**Secretary:** Zane Lewis

**Registered Office**  
Suite 6, 295 Rokeby Rd,  
Subiaco, WA, 6008

**Postal Address**  
Suite 6, 295 Rokeby Rd,  
Subiaco, WA, 6008

**Website**  
[www.frmetals.com.au](http://www.frmetals.com.au)

**T:** +61 (8) 6555 2950  
**F:** +61 (8) 6166 0261

**ACN:** 098 236 938

### Fraser Range Metals Group Limited

Fraser Range Metals Group is an early stage explorer of nickel, copper and gold in the Fraser Range region of Western Australia.

The Company is committed to the exploration of its Fraser Range project located approximately 215km east of Kalgoorlie, Western Australia and to the expansion of its portfolio of mineral resource opportunities.

**For enquiries please contact:**

[info@frmets.com.au](mailto:info@frmets.com.au)  
+61 (8) 6489 1600

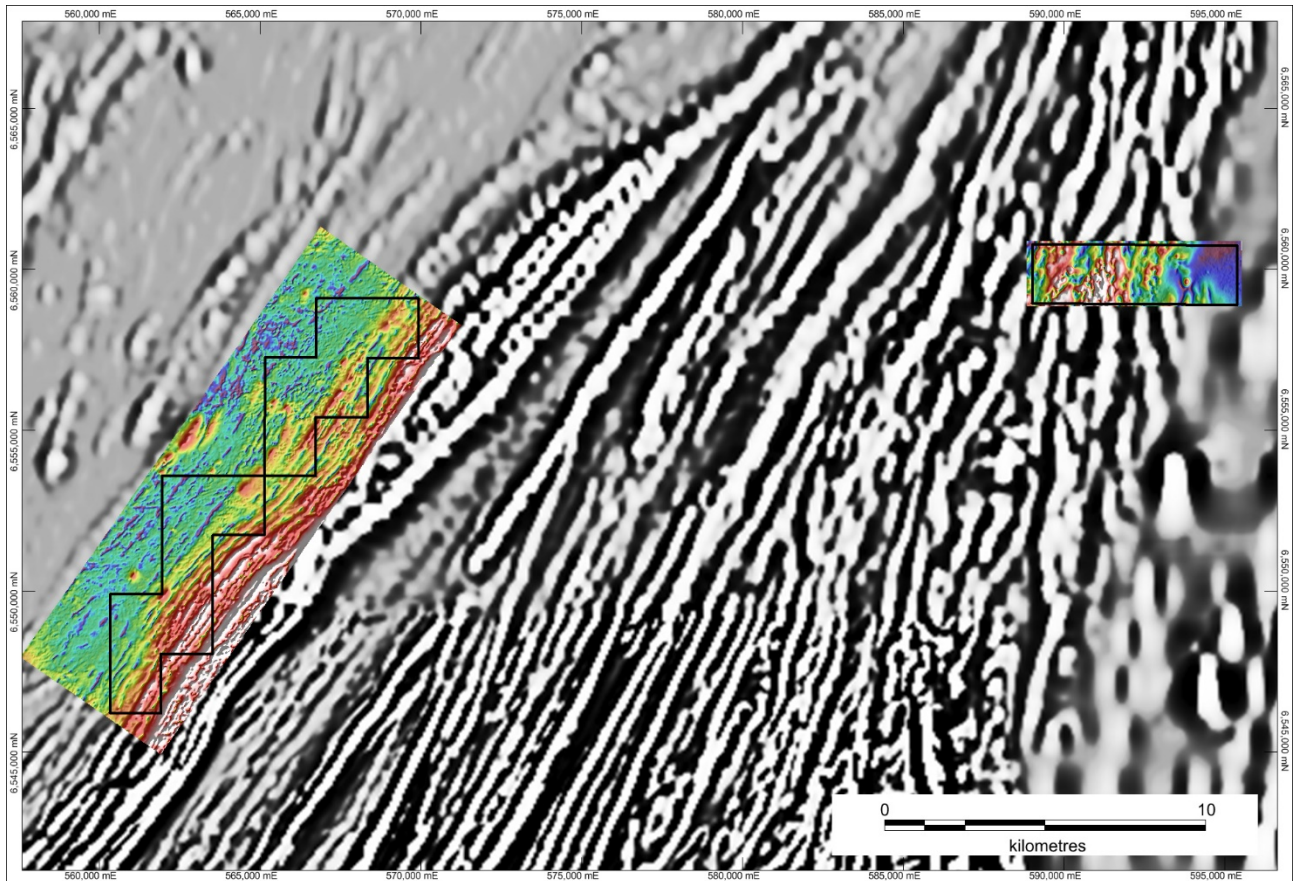
Fraser Range Metals Group Limited (ASX:FRN) (**the Company**) is pleased to announce that Southern Geoscience Consultants (**SGC**) has completed the processing of the raw data from the recently-flown aeromagnetics survey for its 100% owned Fraser Range Project, located within the Albany-Fraser Orogen.

The survey covered all three of the Company's exploration tenements (E28/2390, E28/2392 and E28/2385) at a 50m line-spacing, comprising approximately 2,200 line-kilometres.

The magnetic results have successfully delineated the northwestern edge of the Fraser Complex, with evidence of faulted deeper portions of the Complex further to the northwest, within the FRN tenure. The data also shows the extreme deformation and structural complexity of the area, including several structural breaks and bends in the trending geology.

SGC will now use the data to complete a detailed litho-structural interpretation and 3D modelling, which will then be used to generate targets for a follow-up electromagnetic (EM) survey and drilling.

In parallel to the aeromagnetic data interpretation and modelling, the team from Atlas Geophysics Pty Ltd (**Atlas**) is continuing with the ground gravity survey. The survey will cover all three of the Company's tenements on a 200m line-spacing and 100m station-spacing, resulting in approximately 2,150 stations. The survey has suffered significant delays due to rain and bushfires in the region, but is currently more than 70% complete, and is expected to be completed by the end of the month.



**Figure 1 – Recently-completed high resolution aeromagnetics (AS) over the Fraser Range Project tenure in relation to the lower-resolution regional aeromagnetics (2VD)**

- ENDS -

**FOR FURTHER INFORMATION, PLEASE CONTACT:**

Mr. Aidan Platel

**Director**

Tel: +61 (8) 6555 2950

[aidan@platelconsult.com](mailto:aidan@platelconsult.com)

**About the Fraser Range Project**

The Fraser Range Project (**the Project**) is located within the Albany-Fraser Orogen and consists of a western set of tenements (E28/2390 and E28/2392) and a single eastern tenement (E28/2385). The Project is located on a major tectonic suture between the Eastern Biranup Zone and the Fraser Complex on the western edge of the

major Fraser Range gravity high, and is positioned within a major northwest-trending linear structural corridor that creates a distinct break in the Fraser Range gravity anomaly. The tenements are located between 80km and 110km along trend from Independence Group's (ASX:IGO) major Nova-Bollinger nickel-copper deposit.



### **Forward-Looking Statements**

This document may include forward-looking statements. Forward-looking statements include, but are not limited to, statements concerning Fraser Range Metals Group Limited's planned exploration program and other statements that are not historical facts. When used in this document, the words such as "could," "plan," "estimate," "expect," "intend," "may", "potential," "should," and similar expressions are forward-looking statements. Although Fraser Range Metals Group Limited believes that its expectations reflected in these forward-looking statements are reasonable, such statements involve risks and uncertainties and no assurance can be given that actual results will be consistent with these forward-looking statements.

### **Competent Person's Statement**

The information in this report that relates to Exploration Results and Exploration Targets is based on and fairly represents information and supporting documentation prepared by Mr Aidan Platel (Non-Executive Director of Fraser Range Metals Group Limited). Mr Platel is a member of the Australian Institute of Mining and Metallurgy (AusIMM) and has sufficient experience of relevance to the styles of mineralisation and types of deposits under consideration, and to the activities undertaken to qualify as Competent Persons as defined in the 2012 Edition of the Joint Ore Reserves Committee (**JORC**) Australasian Code for Reporting of Exploration Results, Mineral Resources and Ore Reserves. Mr Platel consents to the inclusion in this report of the matters based on his information in the form and context in which they appear.